



COOKING PASSION SINCE 1877

Venting Hob installation guidance



Taryn Service

Venting Hob Models Range Overview



Pre September
2020

New April 2020



T58TL6EN2
N 90
80cm Venting hob, TwistPad Fire, 2xFlex+Ventilation, Climate Control sensor, Automatic Hood, Frying Sensor, **Home Connect**

Discontinued



T48TD1BN0
N 70
80cm Venting hob, Touch Control, 4 zone + Ventilation, 1 x Combi Zone, Frying Sensor, Auto-On fan

New April 2020



T47TD7BN2
N 70
70cm Venting hob, **Built-in dimension 60cm**, Touch Control, 4 zone +Ventilation, 2 x Combi Zone, Frying Sensor, Auto-On fan

Post September
2020

Existing



T58TL6EN2
N 90
80cm Venting hob, TwistPad Fire, 2xFlex+Ventilation, Climate Control sensor, Automatic Hood, Frying Sensor, **Home Connect**

New September 2020



T48TD7BN2
N 70
80cm Venting hob, Touch Control, 4 zone + Ventilation, 2 x Combi Zone, Frying Sensor, Auto-On fan

Existing



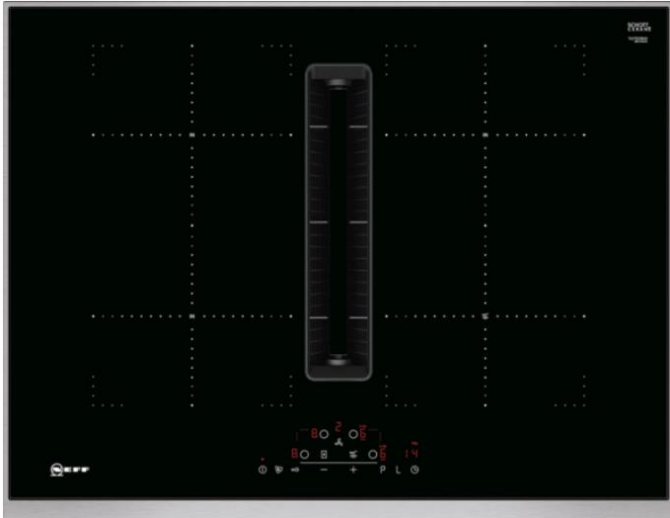
T47TD7BN2
N 70
70cm Venting hob, **Built-in dimension 60cm**, Touch Control, 4 zone +Ventilation, 2 x Combi Zone, Frying Sensor, Auto-On fan



Venting Hob Models

T47TD7BN2, N70, 70cm

B



This induction hob with integrated ventilation combines two appliances in one for a clear view while cooking.

- Touch Control – a convenient way to control hobs with just one touch.
- Combi Induction - 2 individual induction cooking zones can be combined to 1 large zone with even heat distribution.
- Power Boost – optimized power level function for more flexible and even faster heating.
- Induction – the heat is generated directly in the cookware for precise cooking that stops when power is off.

2 Combi Zones

Download full specification from PI centre

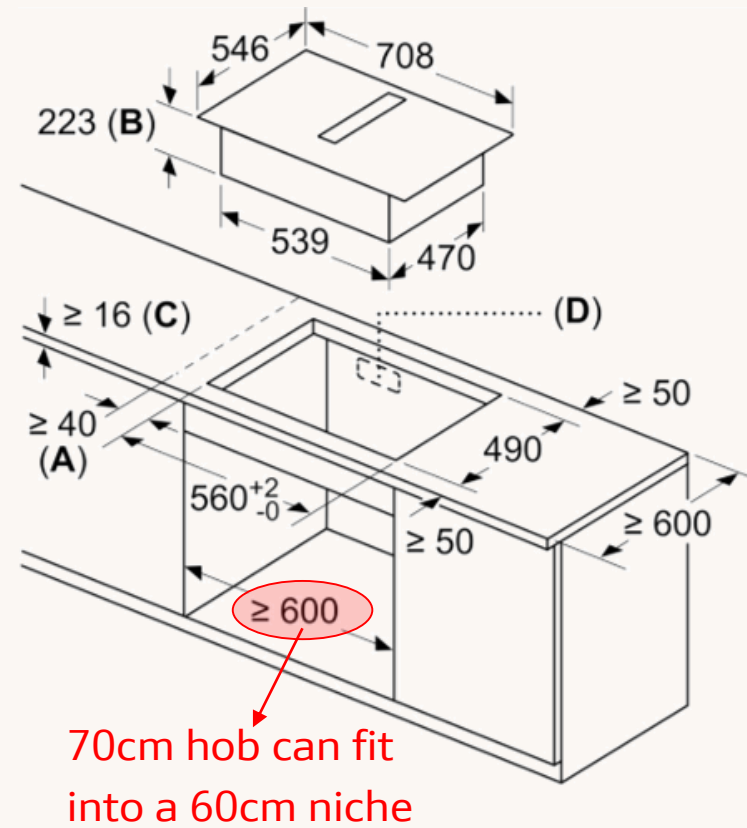


Venting Hob Models

T47TD7BN2 Installation



- A. Minimum distance from the hob cut-out to the wall
- B. Recessing depth (Note- old model depth was 205mm)
- C. The worktop into which the hob is installed must withstand loads of approx. 60kg; suitable substructures must be used if required. Hob weight: approx. 24kg. Hob requires a 16mm work surface thickness minimum.
- D. Cut-out in back panel required for pipework. Exact size and position can be taken from specific drawing.



Venting Hob Models

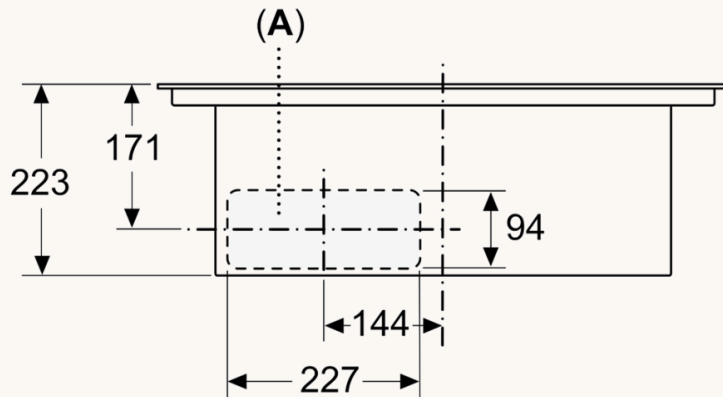
T47TD7BN2 Cut out requirements



During installation the cut out required for the air outlet might vary depending on the type of recirculation/ducting selected

Partly ducted recirculation or fully
Ducted cut out requirements

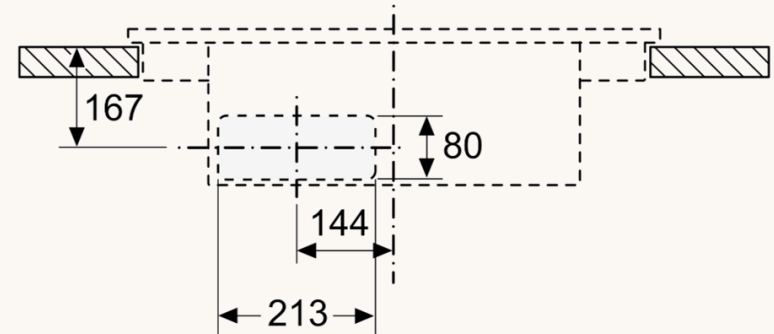
Front view



A: Connected directly at the rear

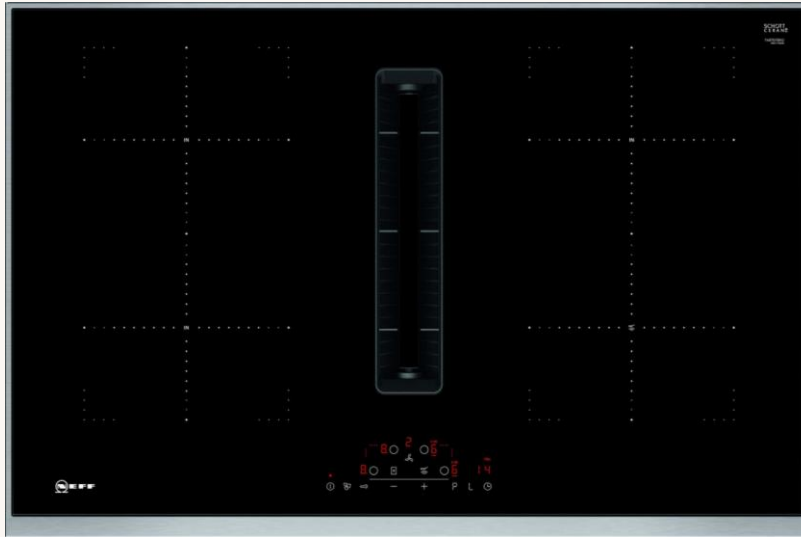
Unducted recirculation cut out
requirements

Front view – unit cut-out
for unducted recirculation



Venting Hob Models

T48TD7BN2, N70, 80cm



N 70, Induction hob with integrated ventilation system, 80 cm

T48TD7BN2



This induction hob with integrated ventilation combines two appliances in one for a clear view while cooking.

- Touch Control – a convenient way to control hobs with just one touch.
- Combi Induction - 2 individual induction cooking zones can be combined to 1 large zone with even heat distribution.
- Power Boost – optimized power level function for more flexible and even faster heating.
- Induction – the heat is generated directly in the cookware for precise cooking that stops when power is off.

2 CombiZones

Download full specification from PI centre

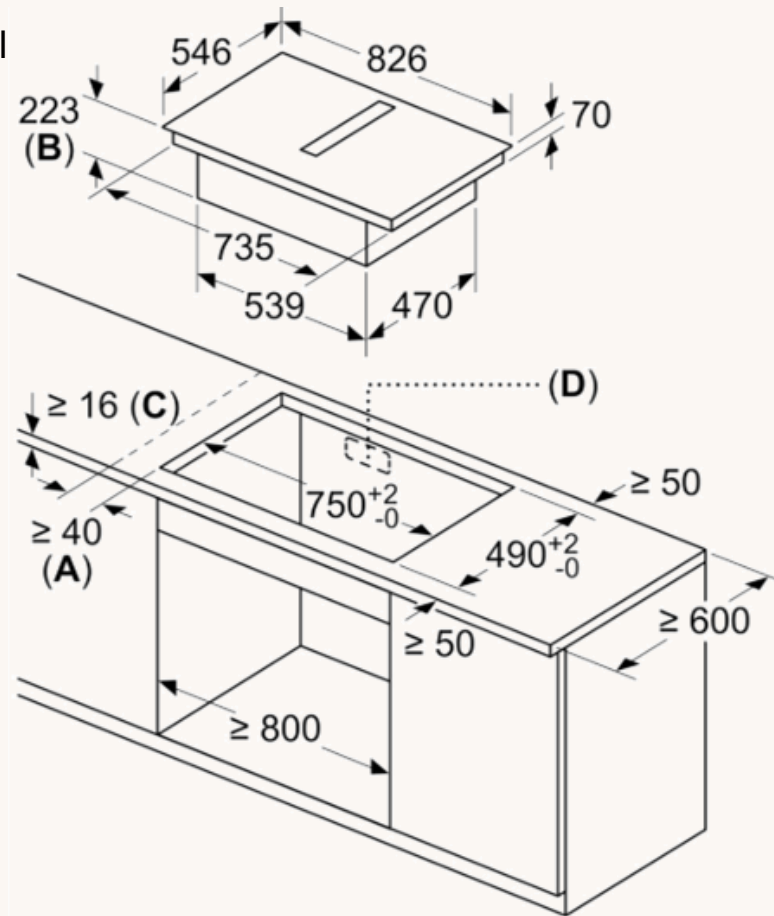


Venting Hob Models

T48TD7BN2 Installation



- A. Minimum distance from the hob cut-out to the wall
- B. Recessing depth (Note- old model depth was 205mm)
- C. The worktop into which the hob is installed must withstand loads of approx. 60kg; suitable substructures must be used if required. Hob weight: approx. 28kg. Hob requires a 16mm work surface thickness minimum.
- D. Cut-out in back panel required for pipework. Exact size and position can be taken from specific drawing.



Venting Hob Models

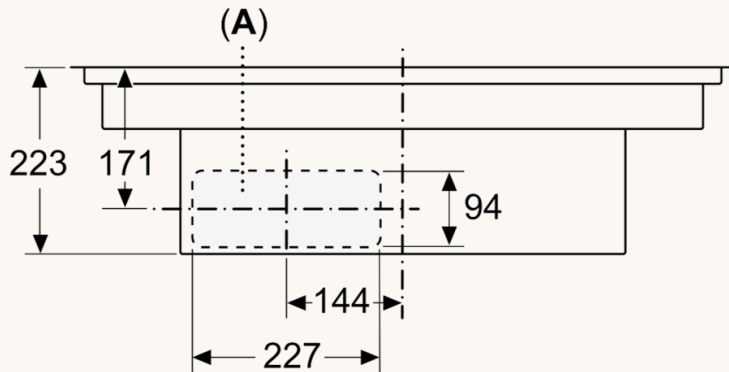
T48TD7BN2 Cut out requirements



During installation the cut out required for the air outlet might vary depending on the type of recirculation/ducting selected

Partly ducted recirculation or fully
Ducted cut out requirements

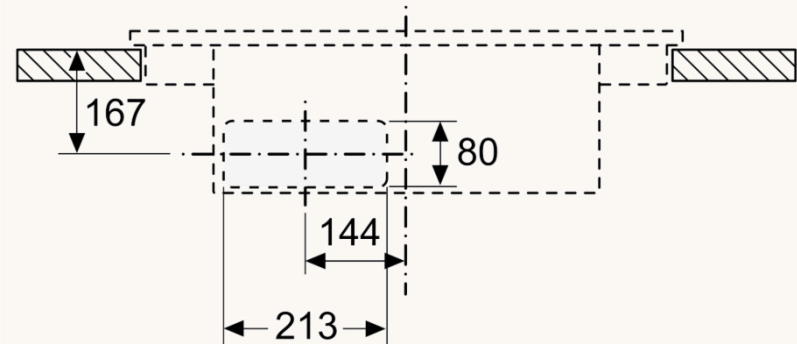
Front view



A: Connected directly at the rear

Unducted recirculation cut out
requirements

Front view - unit cut-out
for unducted recirculation



Venting Hob Models

T58TL6EN2, N90, 80cm

B



This induction hob with integrated ventilation combines two appliances in one for a clear view while cooking.

- TwistPadFire® – our removable, magnetic, illuminated control dial that gives you precise control over all cooking zones.
- Flex Induction – place your pots and pans within the flex zone anywhere you want and heat them exactly where they stand.
- Power Move – the flex zone offers three heating zones: boiling in front, simmering in the middle and warming in the rear.
- Frying Sensor – with 5 selectable temperature settings it monitors the set temperature and holds it steady.
- Home Connect – rediscover your kitchen with our connected home appliances, from wherever you are.

2 FlexInduction zones
Download full specification from PI centre



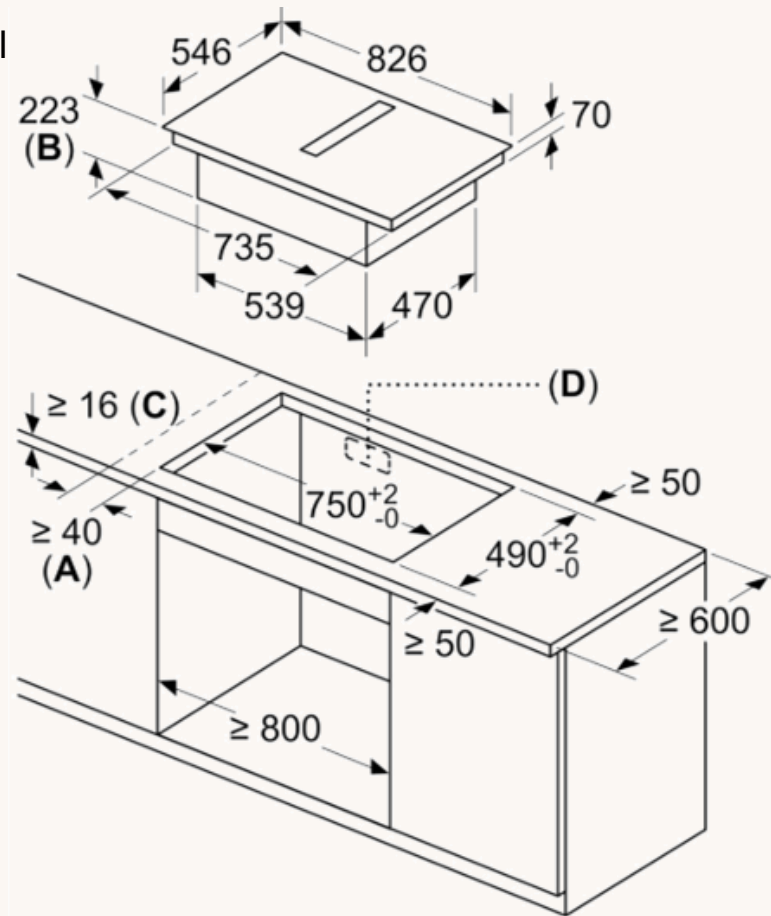
Venting Hob Models

T58TL6EN2 Installation



COOKING PASSION SINCE 1877

- A. Minimum distance from the hob cut-out to the wall
- B. Recessing depth (Note- old model depth was 205mm)
- C. The worktop into which the hob is installed must withstand loads of approx. 60kg; suitable substructures must be used if required. Hob weight: approx. 28kg. Hob requires a 16mm work surface thickness minimum.
- D. Cut-out in back panel required for pipework. Exact size and position can be taken from specific drawing.



Venting Hob Models

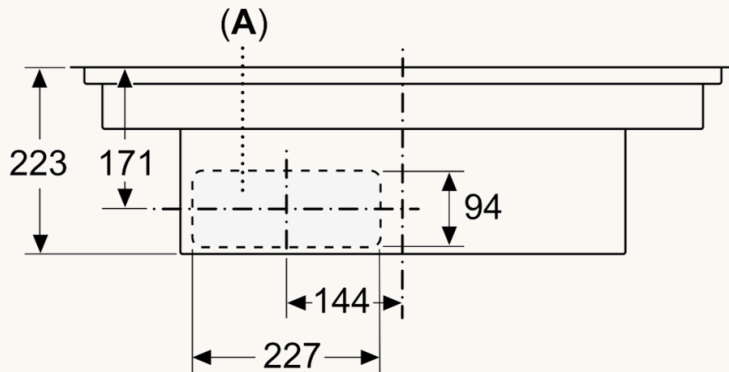
T58TL6EN2 Cut out requirements



During installation the cut out required for the air outlet might vary depending on the type of recirculation/ducting selected

Partly ducted recirculation or fully
Ducted cut out requirements

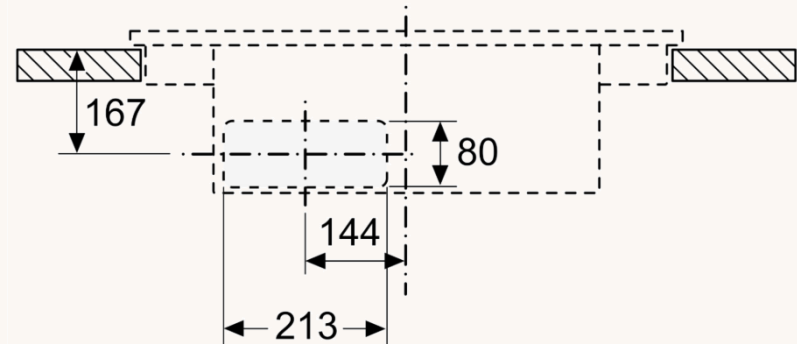
Front view



A: Connected directly at the rear

Unducted recirculation cut out
requirements

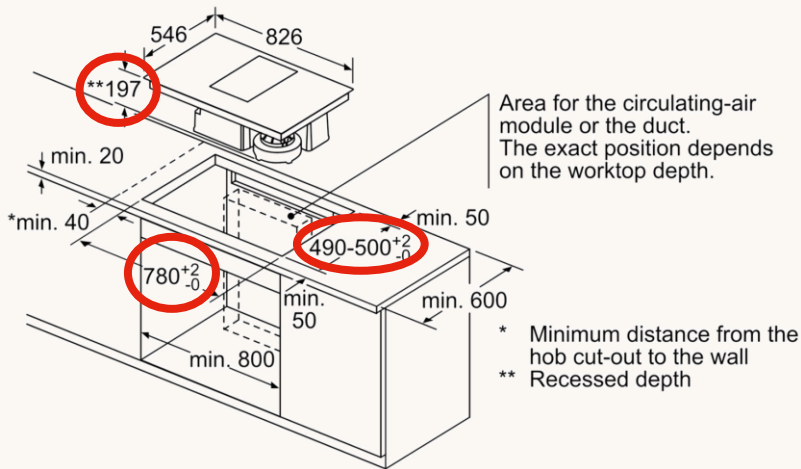
Front view - unit cut-out
for unducted recirculation



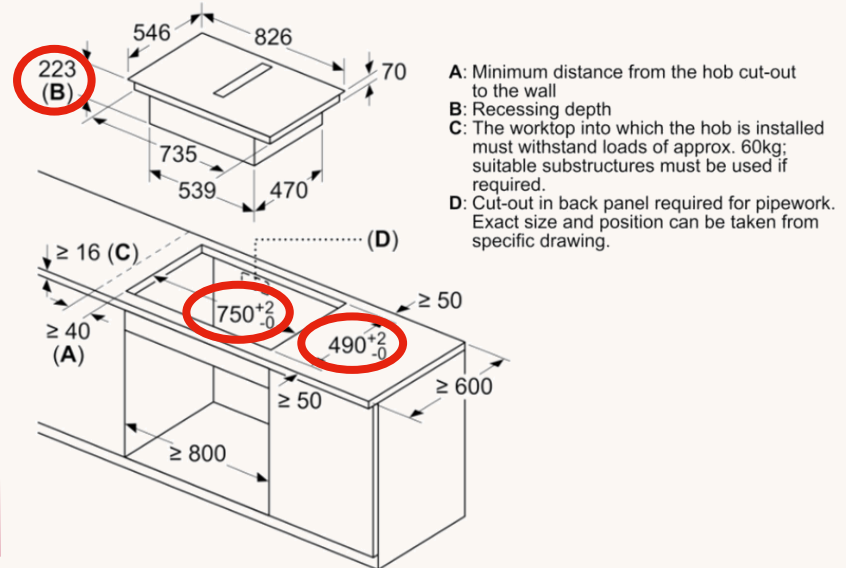
Venting Hob Models

Cut out variants 80cm

Previous Model- T48TD1BN0



New Model- T48TD7BN2, T58TL6EN2



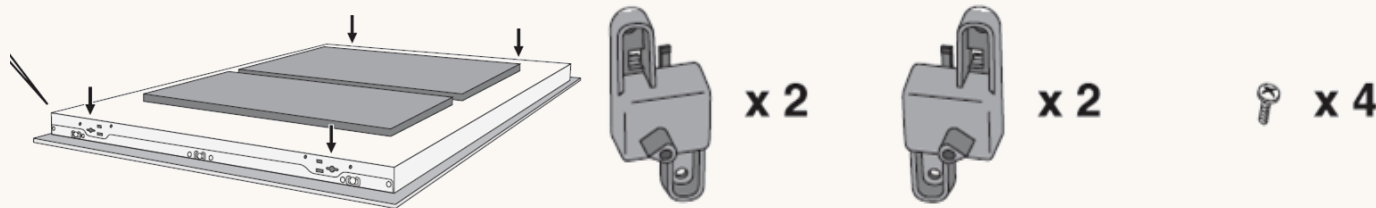
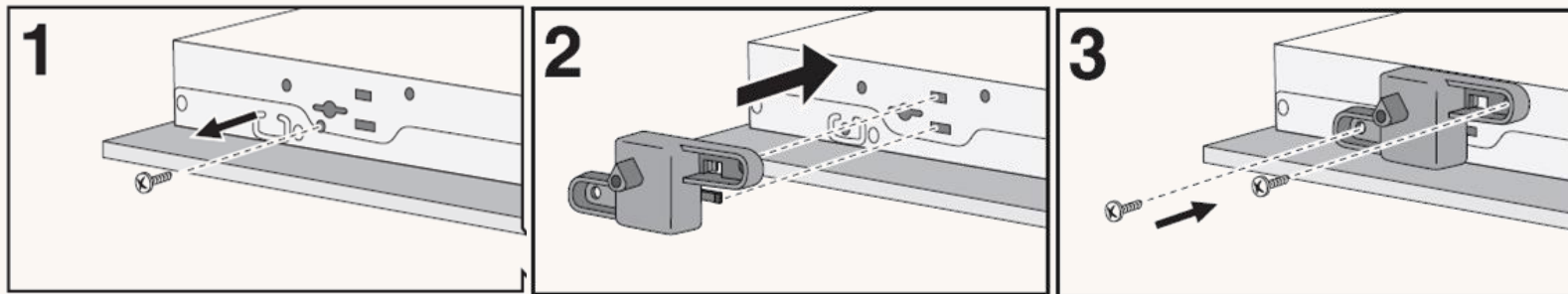
Please Note: Bracket to fit to the edge 490-500 on the old model would hold the hobs in place. If there is a bigger aperture based on previous models dimensions the customer ought not worry as the new models are supplied with some plastic spacer pieces which attach to the edge of the hob to fit into the previous aperture size



Venting Hob Models

80cm Plastic Spacer Pieces

- If there is a bigger aperture based on previous models there are no fixing for the new hob.
- In order to overcome this the new models are supplied with some plastic spacer pieces which attach to the edge of the hob to fit into the previous aperture size

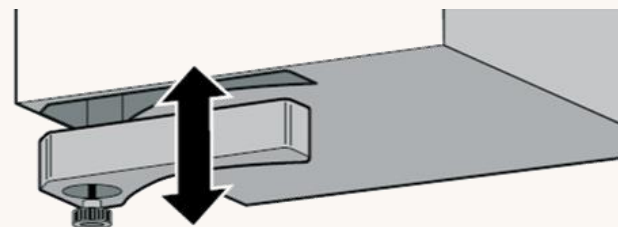
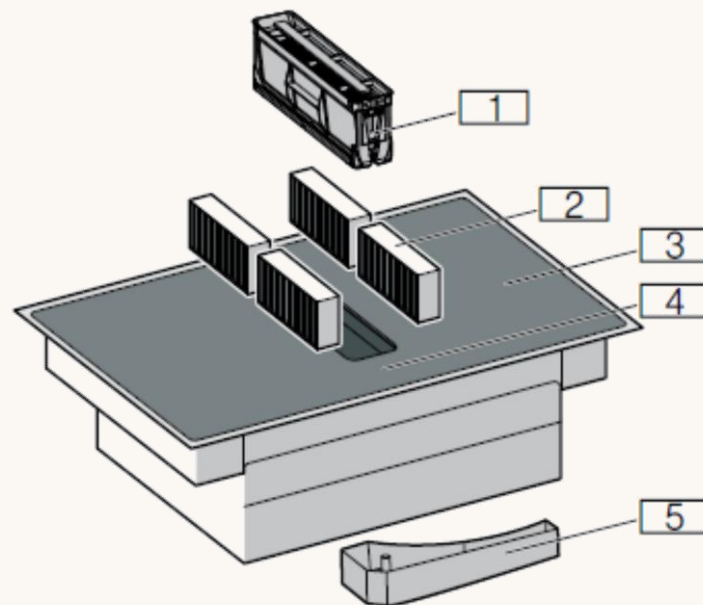


Venting Hob Models

Key Features



1. Black metal grease filter (200ml of liquid can be held)
2. Activated charcoal filter for air recirculation or acoustics filter for air extraction*
3. Hob
4. Control panel
5. Overflow container (700ml of liquid can be held), which is accessed from the front under the hob.



*Depending on the appliance specifications



Venting Hob Models

Electrical Connection



Ensure that the power cable is only installed or replaced by a qualified electrician

- We recommend connecting the cable to the product before inserting it into the worktop, this makes it easier to install
- See the installation manual for more information on establishing a connection to the mains.

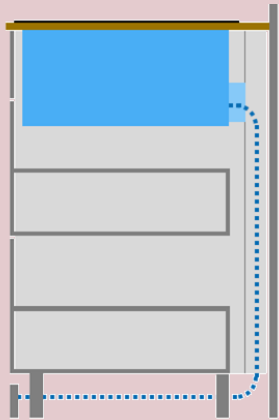


Types of Installation

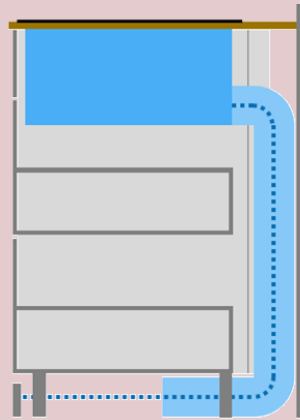


COOKING PASSION SINCE 1877

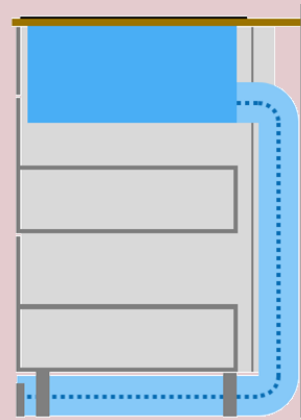
Unducted
Recirculation



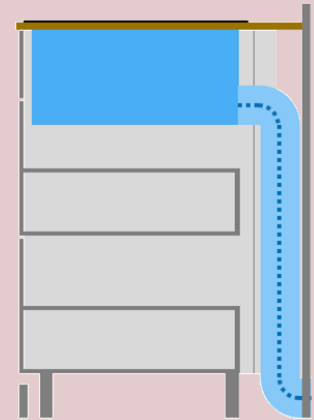
Customised Partly
Ducted Recirculation



Customised Fully
Ducted Recirculation




Ducted Exhaust
Extraction (to the
outside)



Types of Installation

Setting the Hob Installation type

Before using for the first time the “operation mode” setting needs to be inputted:

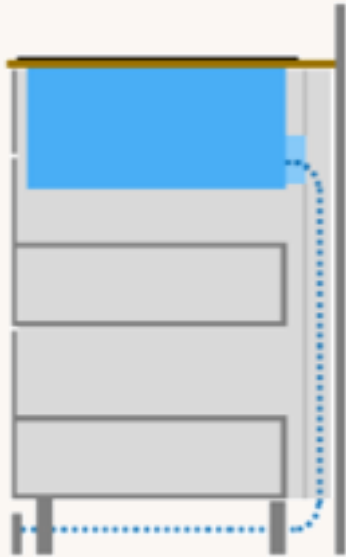
- Turn on the hob
- Within 10 seconds touch and hold the Bell symbol for four seconds 
- Touching the bell symbol again takes you to the basic settings and can be pressed repeatedly until the desired function is displayed
- To set the recirculation mode C17 needs to be selected
- Select the relevant option (see below)
- Hold the timer symbol for four seconds to save the settings.

c 17	Setting air recirculation mode or air extraction mode
0	Configuring air recirculation mode.*
1	Configuring air extraction mode.



Types of Installation

Unducted Recirculation



Reliant on the hob and the furniture to disperse air- Uses the void at the back of the appliance and the furniture to recirculate the air.

- Allows for full depth drawers
- Min. void gap of 50mm recommended for optimum performance
- Fan runs for 30 minutes after use at speed 1 to draw air through filters, to dry them and move any moisture through the void at the back of the appliance
- Minimum worktop depth: 60cm
- Suitable for island installations
- No ducting materials required- Slider accessory instead
- This is **NOT** suitable for installations against a single cavity non insulated walls



Example Images only



Types of Installation

Unducted recirculation example

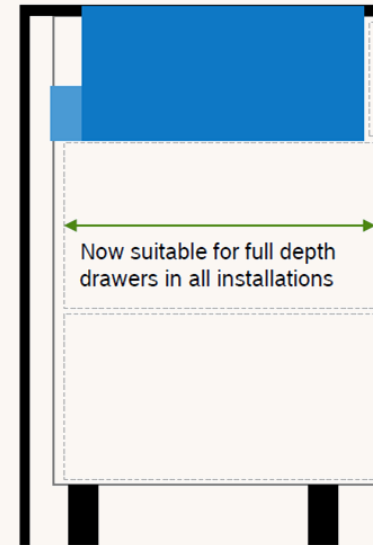
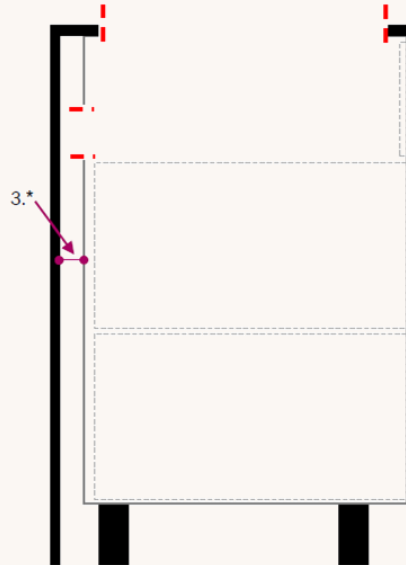
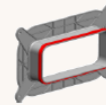
▶ use standard furniture

▶ apply standard cut-outs

▶ insert hob with "slider"

▶ easily connect "slider"

1. Standard worktop cut-out
2. Backpanel cut-out (ca. 220 x 90mm)
3. * 50mm void recommended (>25mm)

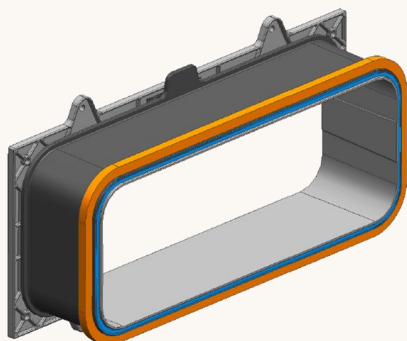


Types of Installation

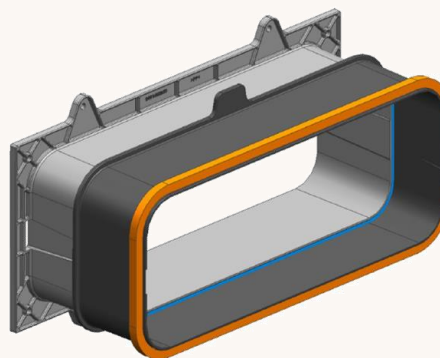
Unducted recirculation- Telescopic Slider

Z821UD0 (Airtight, self-gluing)

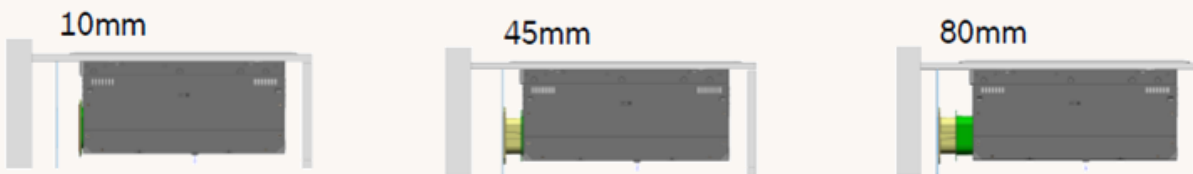
Maximum Closed Position
10mm out of appliance



Maximum Opened Position
80mm out of appliance



Note: If cabinet is deeper than 700mm-750mm the hob needs to be repositioned or a partly/fully ducted method would need to be used



Extend slider to **ANY** value between 10mm-80mm.

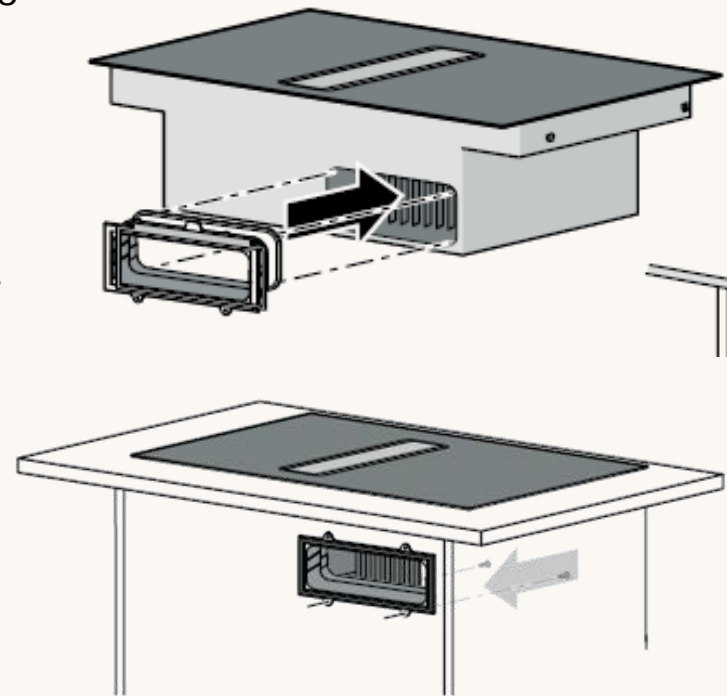
E.G 45mm/ 60mm



Types of Installation

Unducted recirculation- Inserting the telescopic Slider

- Insert the slider into the hob before it is installed into the furniture
- Ensure the air outlet cut out is the right side for the installation (see slide 4/7)
- Once inserted into the furniture the telescopic slider can be extended between a distance of 10mm to 80mm
- If necessary the adapter can be secured into place using screws

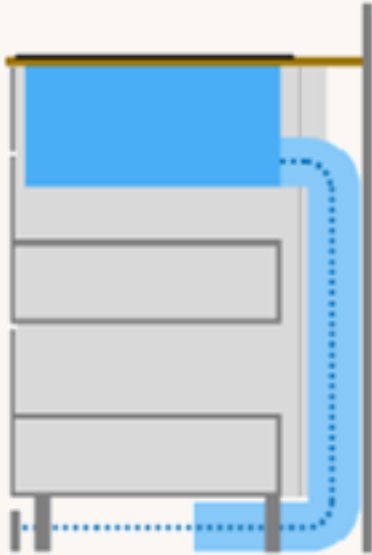


PLEASE NOTE:

Slider is **ONLY** for use in the unducted installation- not as a connector piece for ducting panels

Types of Installation

Partly ducted Recirculation



Relies on a combination of ducting and furniture to disperse the air- Uses ducting to guide air partially around the furniture then uses the remaining void.

- Requires reduced depth drawers
- Suitable both for island installations or installations against a single wall without installation
- Minimum worktop depth: 70cm
- Requires ducting panels to be purchased separately for installation- however requires less ducting than fully ducting
- Ducting panels insert into the back of the hob directly
- Fan runs for 30 minutes after use at speed 1 to draw air through filters, to dry them and move any excessive moisture and odors

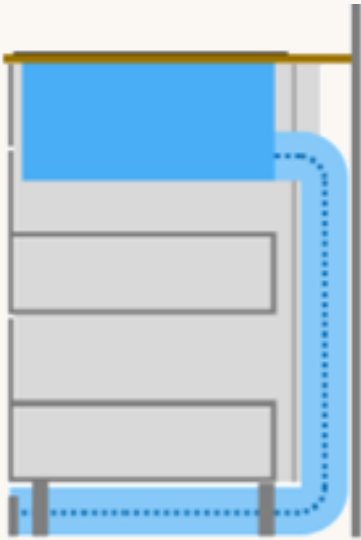


Example Images only



Types of Installation

Fully ducted Recirculation



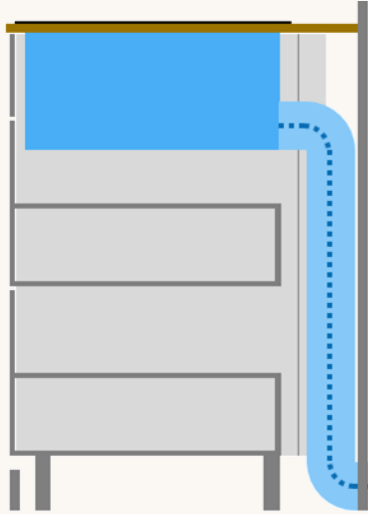
Relies solely on ducting panels to disperse the air from the appliance to the furniture plinth.

- Requires reduced depth drawers- ducting required is 94mm and needs to be accounted for
- Suitable both for installations against a single wall without installation
- Minimum worktop depth: 70cm
- Requires full ducting panels to be purchased separately for installation
- Requires planning the recirculation route for the ducting panels
- Ducting panels insert into the back of the hob directly
- Fan runs for 12 minutes after use at speed 1 to draw air through filters, to dry them and move any moisture



Types of Installation

Ducted Exhaust Extraction



Relies solely on ducting panels to disperse the air from the appliance to the outside.

- Adequate performance over 8m of ducting with up to 3 X 90° bends
- Ideal for those looking to extract to the outside
- Minimum worktop depth: 70cm
- Requires reduced depth drawers- ducting required is 94mm and needs to be accounted for
- Requires ducting panels to be sourced for installation.
- Requires planning the extraction route and outlet for the ducting panels
- Ducting panels insert into the back of the hob directly
- Fan runs for 12 minutes after use at speed 1 to draw air through filters, to dry them and move any moisture



Example Images only

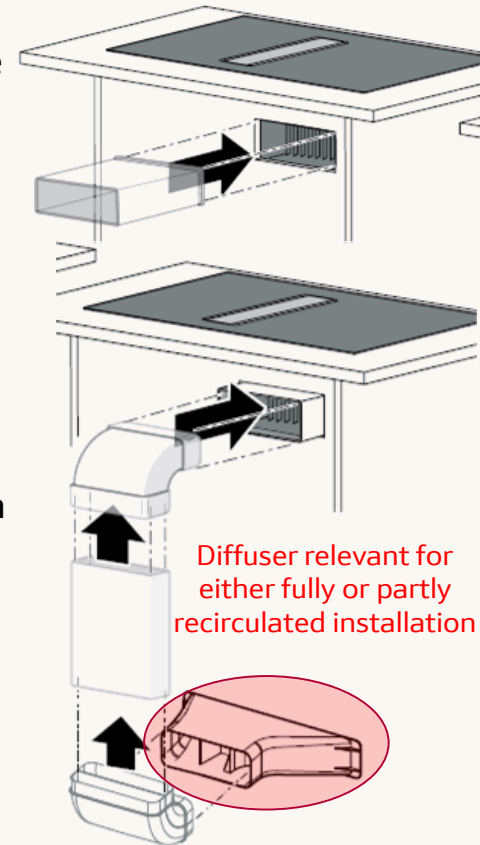


Types of Installation

Installing ducting for partly/fully ducted recirc. or ducted exhaust extraction



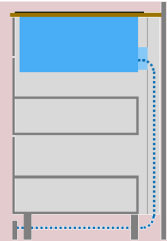
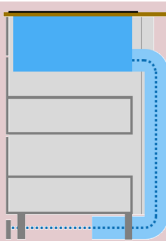
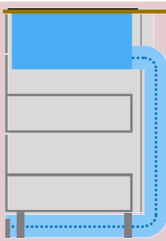
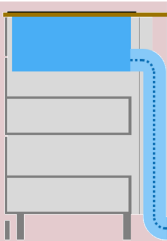

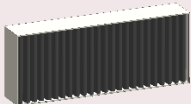
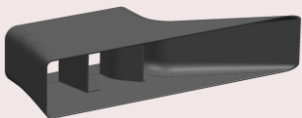
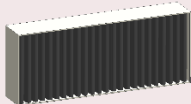
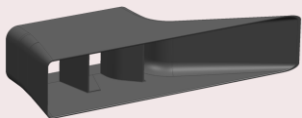
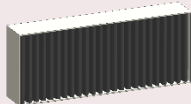
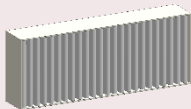
- Install the hob into the unit and ensure the cut outs are made for the air outlet (See slide 4/7).
- Use the adhesive seal to secure the ducting panel directly to the air outlet on the cooktop.
- Connect the relevant ducting panels
- Finally connect the diffuser for partly or fully recirculated installation or the relevant extraction components for ducted exhaust extraction installation.
- If using ducted recirculation ensure there is an area of a minimum of 400 cm² in the plinth for return air flow into the kitchen



Note: All ducting panels need to be sourced separately- not available from Neff.



Installation Overview

	Unducted Recirculation	Customised Partly Ducted Recirculation	Customised Fully Ducted Recirculation	Ducted Exhaust Extraction
Neff Venting Hob Installation Options & Requirements				
Venting Hobs	T58TL6EN2 T47TD7BN2 T48TD7BN2	T58TL6EN2 T47TD7BN2 T48TD7BN2	T58TL6EN2 T47TD7BN2 T48TD7BN2	T58TL6EN2 T47TD7BN2 T48TD7BN2
Required Neff Accessory	Z821UD0	Z821PD0	Z821PD0	Z811DU0
Accessory contents	1 x Telescopic "slider" (self-adhesive, air tight seal)  4 x Clean Air Odour Filters 	1 x Air diffuser  4 x Clean Air Odour Filters  1 x Adhesive seal	1 x Air diffuser  4 x Clean Air Odour Filters  1 x Adhesive seal	4 x Acoustic noise reducing filters  1 x Adhesive seal
Additional required Accessories (not available from Neff)	None	Flat ducting elements - to suit flat channel ducting approx. 220x90mm	Flat ducting elements - to suit flat channel ducting approx. 220x90mm	Flat ducting elements - to suit flat channel ducting approx. 220x90mm



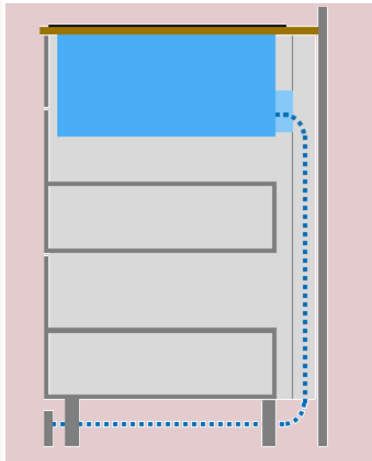


Types of Installation

Example of Installation

Requirements- Unducted Recirculation

Unducted Recirculation



Adhesive Seal

Telescopic Slider



Requirements:

- Z821UD0

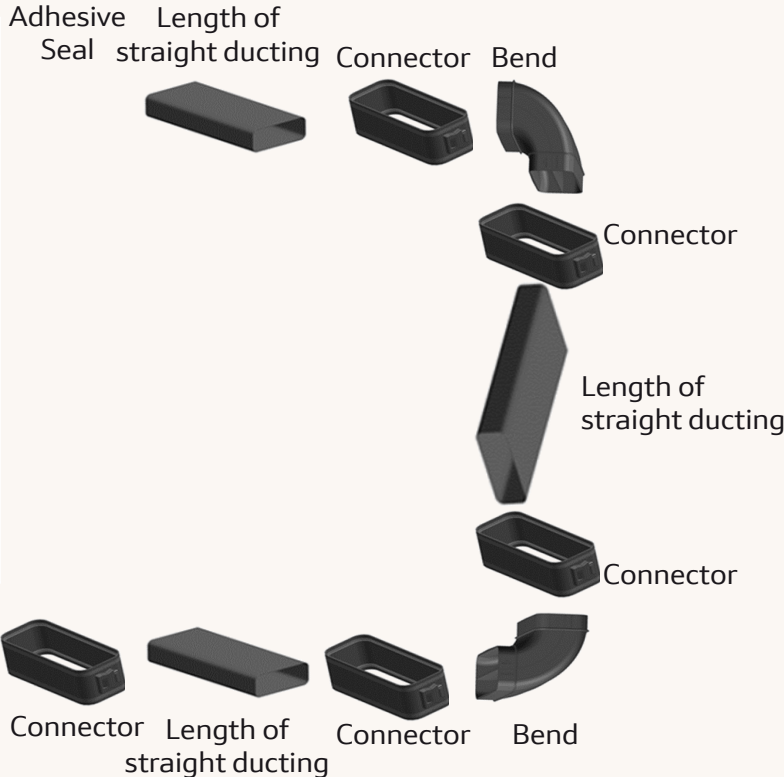
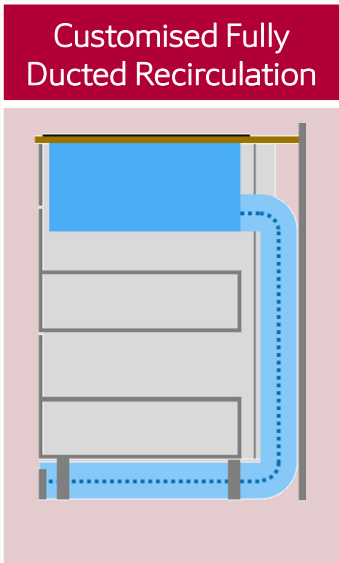




Types of Installation

Example of Installation

Requirements- Fully Ducted Recirculation



Requirements:

- Z821PD0
- 3 x Lengths of Straight Ducting
- 5 x Connector Pieces
- 2 x 90° Degree Bends

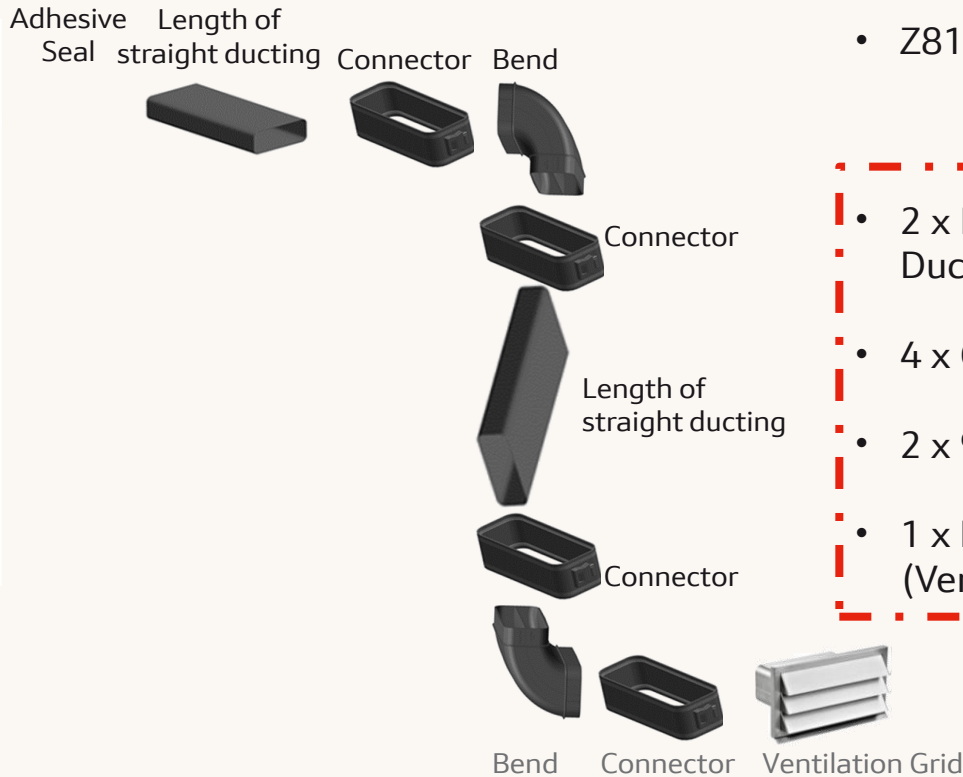
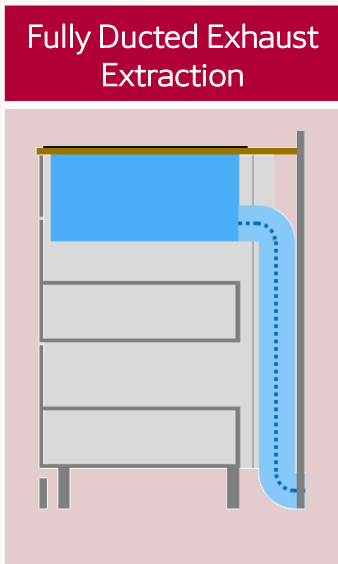




Types of Installation

Example of Installation

Requirements- Ducted Exhaust Extraction



Requirements:

- Z811DU0
- 2 x Lengths of Straight Ducting
- 4 x Connector Pieces
- 2 x 90° Degree Bends
- 1 x External Cover (Ventilation Grid)

